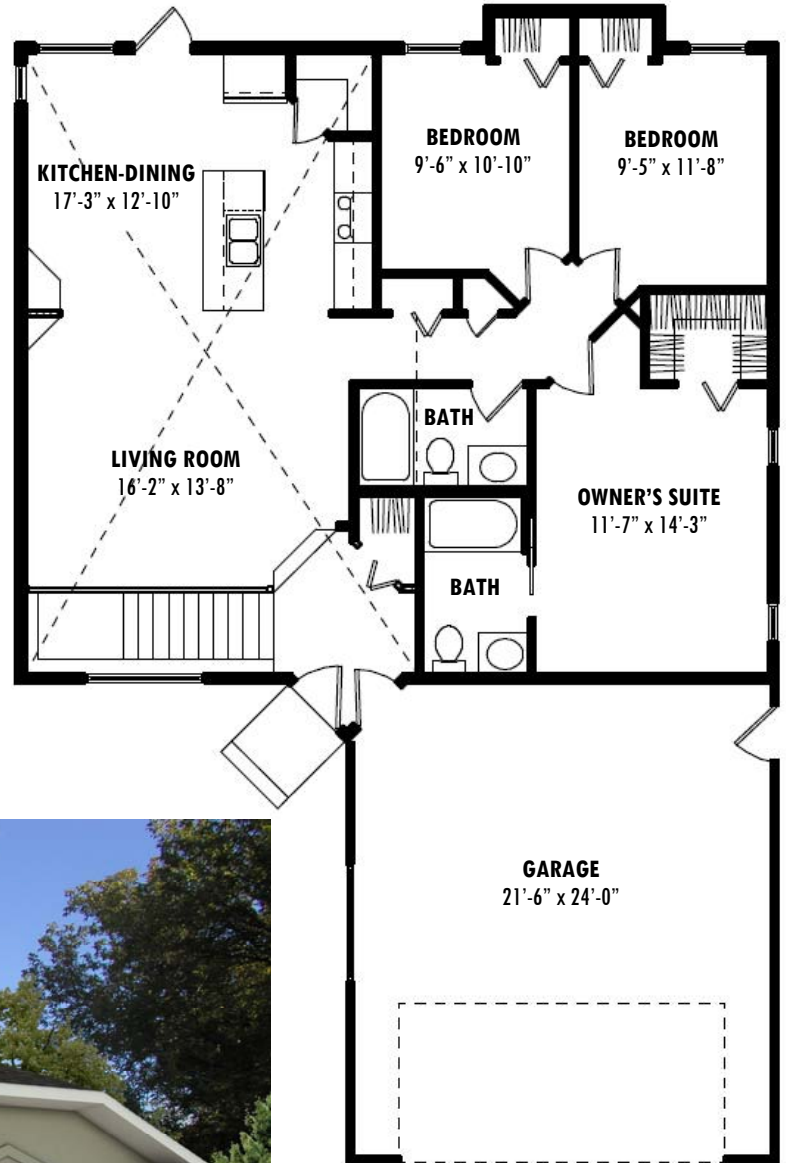


# Presenting the Vista

Style: Raised Bungalow • Size as shown: 1242 sq ft

## A Functionally Designed Floor Plan

- Modern, open floor plan with vaulted ceiling
- Grand living room window for superb view and extra light into a future finished basement
- Large open kitchen featuring a pantry and island with eating bar
- Maple cabinets and railings
- 3 bedrooms and 2 full baths on main floor
- Walk-in closet off owner's suite
- Double attached garage with opener, two remotes, and keyless entry pad
- Stucco or vinyl siding - low maintenance exterior
- Streetscape's Standard Signature Specifications and Finishing Package



## Customize the Vista

Stucco or Vinyl siding colours • Soffit, fascia and eaves trough colours • Roofing colour • Interior paint colours • Flooring throughout • Lighting fixtures • Counter tops, cabinets and cabinet hardware



**STREETSCAPE**  
homes