

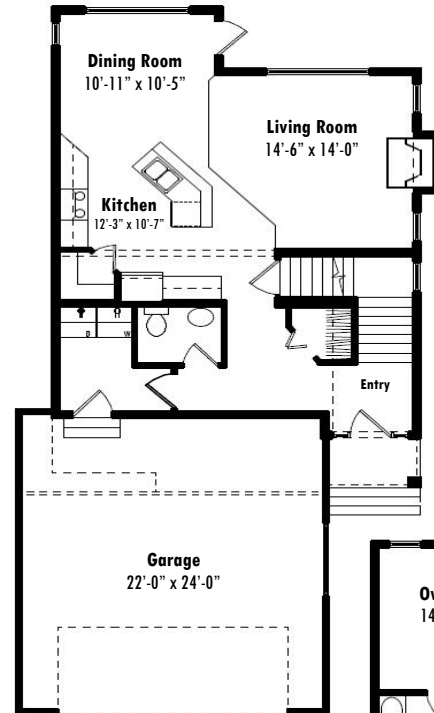
Presenting the Melrose

Style: Two Story • Size as shown: 1 663 sq ft

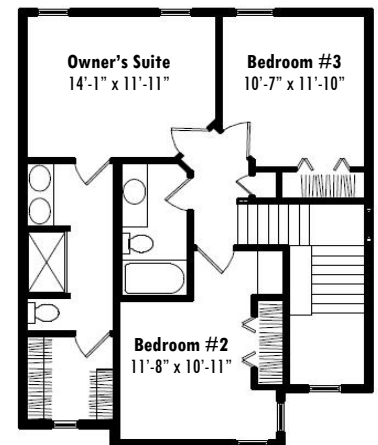
A Functionally Designed Floor Plan

- Modern floor plan spanning two floors with attached garage
- Large open living room, comfortable dining room and spacious kitchen with pantry.
- Nine foot ceilings on main floor
- Maple cabinets and railings
- Convenient main floor laundry and mud room
- Half bath on main floor
- Three bedrooms, two full baths on upper floor
- Walk-in closet off owner's suite
- Large basement windows for future development
- Double attached garage with opener, two remotes and keyless entry pad
- Stucco or vinyl siding – low maintenance exterior
- Streetscape's standard (Signature) thoughtful feature and finishing package
- Optional fireplace and cantilever Optional fireplace and cantilever millwork

Main Floor



Upper Floor



Customize the Melrose

Stucco or Vinyl siding colours • Soffit, fascia and eaves trough colours • Roofing colour • Interior paint colours • Flooring throughout • Lighting fixtures • Counter tops, cabinets and cabinet hardware



STREETSCAPE
h o m e s