

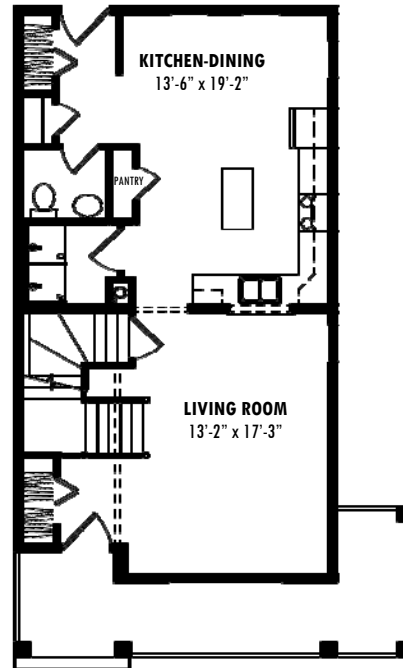
# Presenting the Lansdowne

Style: Neo-Traditional Two Story • Size as shown: 1578 sq ft

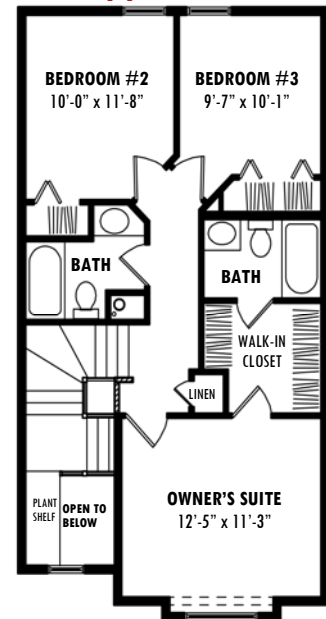
## A Functionally Designed Floor Plan

- Modern, open floor plan with historical charm
- Spacious open kitchen with pantry and large island
- Maple cabinets and railings
- Convenient main floor laundry
- Half bath on main floor
- Three bedrooms, two full baths on upper floor
- Walk-in closet off owner's suite
- Large basement windows for future development
- Welcoming wrap around porch
- Rear lane access for future back yard garage development
- Stucco or vinyl siding – low maintenance exterior
- Streetscape's Standard Signature Specifications and Finishing Package

## Main Floor



## Upper Floor



## Customize the Lansdowne

Stucco or Vinyl siding colours • Soffit, fascia and eaves trough colours • Roofing colour • Interior paint colours • Flooring throughout • Lighting fixtures • Counter tops, cabinets and cabinet hardware



**STREETSCAPE**  
h o m e s