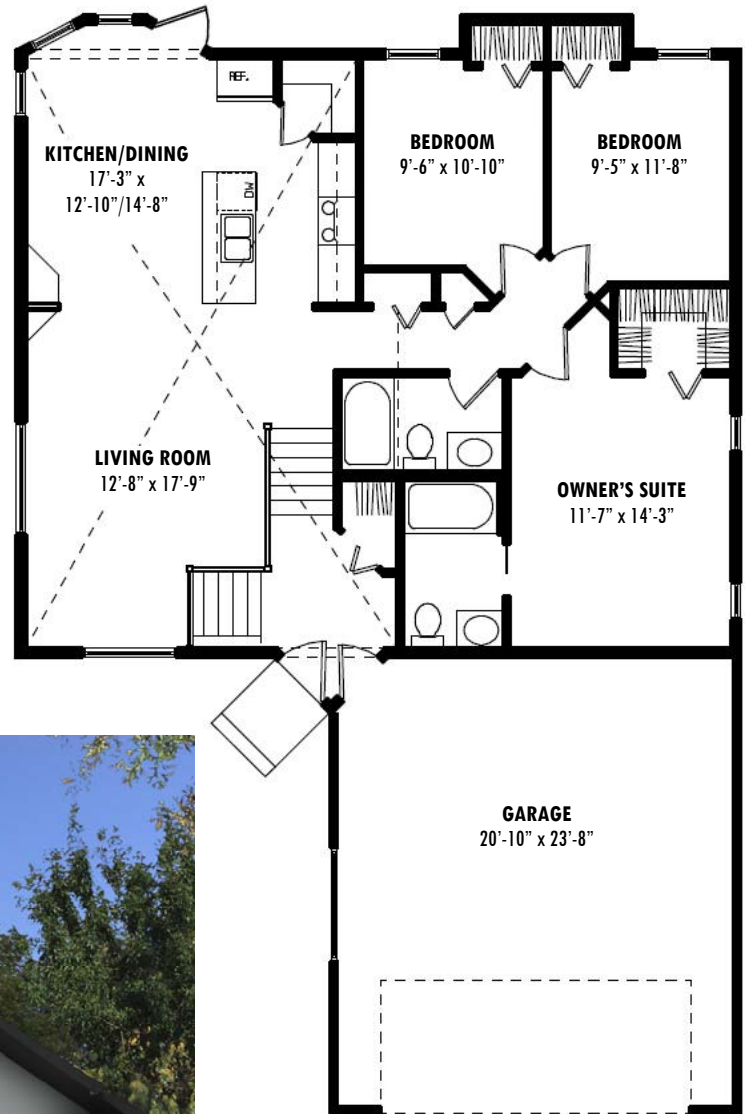


Presenting the Altus

Style: Bi-Level • Size as shown: 1255 sq ft

A Functionally Designed Floor Plan

- Modern, open floor plan with vaulted ceiling
- Innovative kitchen design with island overlooking dining area and living room
- Maple cabinets and railings
- 3 bedrooms and 2 full baths on main floor
- Walk-in closet off owner's suite
- Raised main floor with large basement windows for extra sunlight into future basement development
- Double attached garage with opener, two remotes, and keyless entry pad
- Stucco or vinyl siding - low maintenance exterior
- Streetscape's Standard Signature Specifications and Finishing Package



Customize the Altus

Stucco or Vinyl siding colours • Soffit, fascia and eaves trough colours • Roofing colour • Interior paint colours • Flooring throughout • Lighting fixtures • Counter tops, cabinets and cabinet hardware



STREETSCAPE
h o m e s