

# Show Home – 326 Rempel Bay

Style: Two Story • Size as shown: 2008 sq ft



Call our sales team (306) 370-7323  
Email [info@streetscape.ca](mailto:info@streetscape.ca)

For more information on prices and possession dates visit our website at [streetscape.ca](http://streetscape.ca).

## General Information

326 Rempel Bay, Saskatoon  
Stonebridge Neighbourhood

Model: The Stratum

Size: 2008 square feet

New Home Warranty by the New Home  
Warranty Program of Saskatchewan Inc.



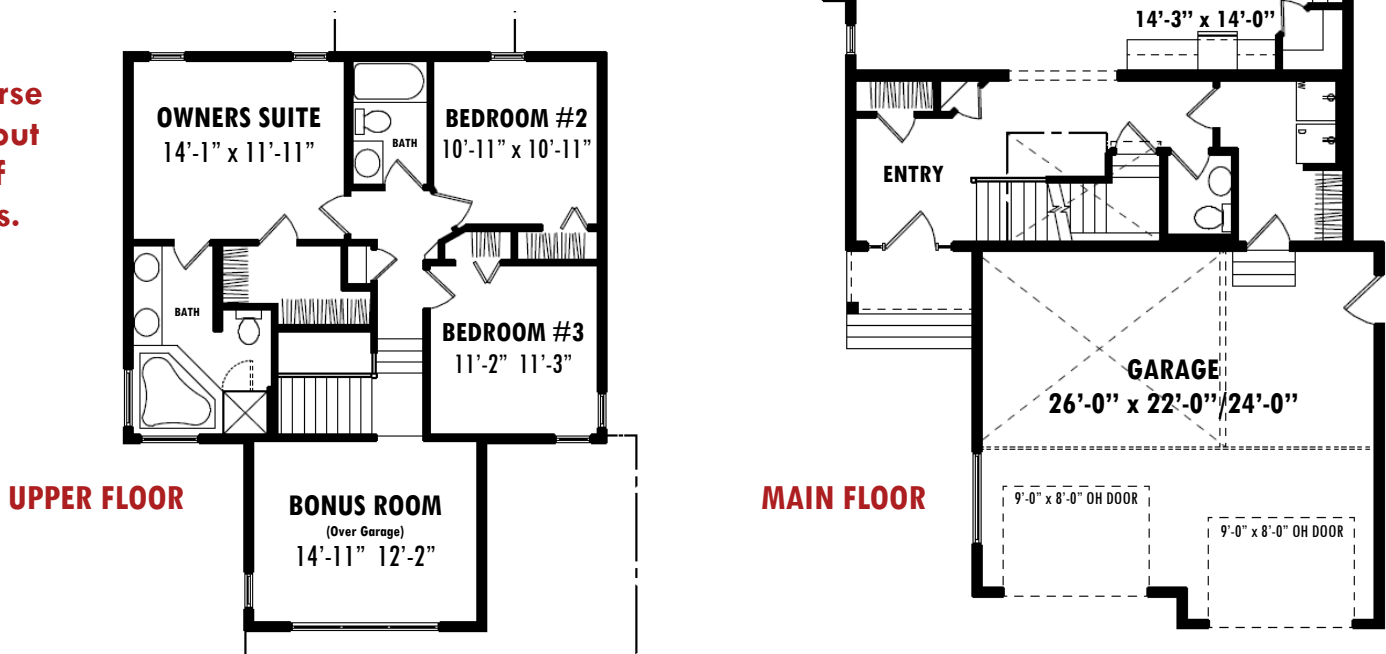
WebID#613

## ENERGY STAR® Qualified New Home:

- Triple Low E Argon windows
- **New!** Condensing tankless water heater
- Ultra high efficiency (95%) furnace
- Perimeter basement walls insulated to R-20 (includes electrical plugs)
- Programmable thermostat
- Dual and 4 litre flush toilets
- Air Exchanger - HRV
- R-50 insulation in attic
- 1.75 GPM Showerheads

Lot Info: Quiet cul-de-sac location only half a block away from future parks.

See reverse  
of handout  
for list of  
upgrades.



**STREETSCAPE**  
h o m e s



# For Sale – 326 Rempel Bay

Style: Two Story • Size as shown: 2008 sq ft

## Upgrades Included in This Home:

- Spacious kitchen features maple cabinetry with upper cabinets that go to the ceiling and luxurious soft close drawers. Quartz countertops with undermount sinks as well as under cabinet lighting and a tiled backsplash make this kitchen sparkle.
- Full Bosch stainless steel appliance package including induction cooktop, deluxe range-hood, wall oven, microwave, fridge, dishwasher, washer and dryer included.
- Kohler's Simplice single lever pull down spray tap in kitchen.
- Gas fireplace in living room features tile above a custom maple mantel with cultured stone surrounding the warm glow of the fire.
- Air conditioning for those wonderful summer months.
- Dining room features elegant and eye catching architectural ceiling detail. Upgraded trim package throughout home.
- Luxurious bathrooms also feature Quartz countertops with undermount sinks and tile backsplash. The ensuite bath features a corner jetted tub with separate tiled shower and double sinks.
- Surround sound wiring in living room and bonus room.
- Nine foot ceilings on main floor include pot lights in kitchen and living room.
- Hardwood flooring in living room, kitchen, and dining room. Ceramic tile flooring in front entry, utility room, and all baths.
- Poured concrete driveway and walkway to front entrance
- Acrylic stucco exterior with cultured stone accents.
- Nine foot basement walls allow for extra large basement windows for future development.
- Double attached garage with opener, two remotes, and keyless entry pad.
- Streetscape's Standard Signature Specifications.
- Many other upgrades included.

